



# GREEN LANE MASJID

AND COMMUNITY CENTRE

---

# ANNUAL REPORT

2019







# GOD IN THE LIVES OF PEOPLE

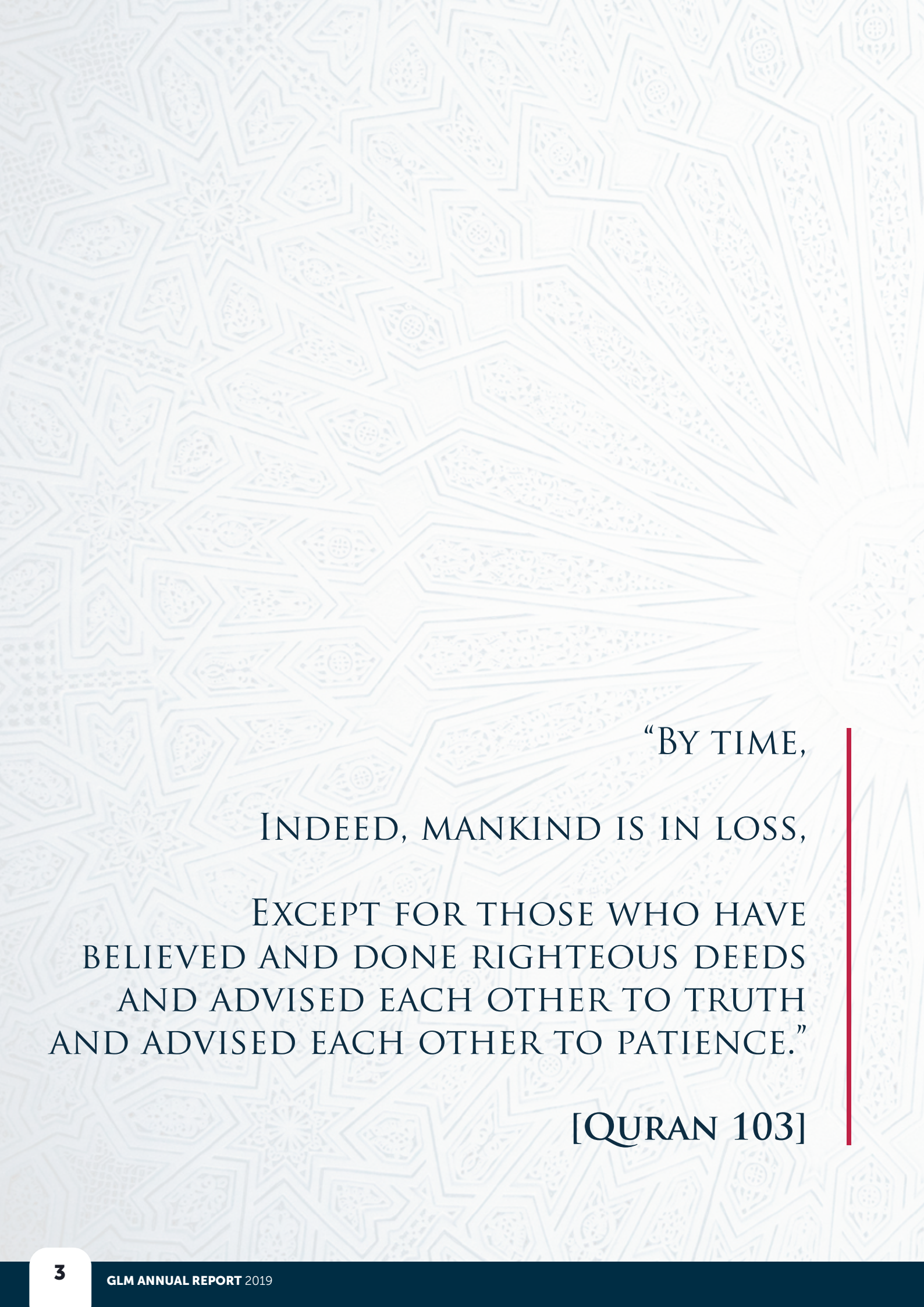




"THE BEST OF PEOPLE ARE THOSE WHO  
BRING THE MOST BENEFIT TO MANKIND."

**Saying of the Prophet Muhammad** (peace be upon him)





“BY TIME,  
INDEED, MANKIND IS IN LOSS,  
EXCEPT FOR THOSE WHO HAVE  
BELIEVED AND DONE RIGHTEOUS DEEDS  
AND ADVISED EACH OTHER TO TRUTH  
AND ADVISED EACH OTHER TO PATIENCE.”  
[QURAN 103]



# CONTENTS

<b>INTRODUCTION</b>	<b>5</b>
Message from chair of trustees and CEO	
<b>ACTIVITIES AND SERVICES</b>	<b>7</b>
Vision and cycle of work	7
Youth and social activities	9
Welfare services	17
Dawah - Outreach Activities	27
Education	43
Mosque activities	49
Humanitarian work and Social Campaigns	55
<b>CASE STUDIES</b>	<b>59</b>
<b>ANNUAL SOCIAL CAMPAIGNS</b>	<b>63</b>
<b>MEDIA ENGAGEMENT</b>	<b>69</b>
<b>OUR PARTNERS</b>	<b>71</b>
<b>CONTACT US</b>	<b>74</b>



# MESSAGE FROM THE CHAIR OF TRUSTEES

Assalamu Alaykum (peace be upon you),

Alhamdulillah, it's an honour to be able to present yet another annual report. 2019 is the year, where as a masjid, we have seen the greatest overall growth in our services, projects and departments across the board.

Allah (swt) has allowed us, through His mercy and blessings, to greatly diversify the nature of our welfare services, educational programmes and social events. As a result, we have had an unprecedented amount of positive engagement with our community, local organisations and national media this year. We pray that Allah (swt) accepts the efforts of those who have worked tirelessly throughout the year.

I sincerely hope this report will highlight the impact that our work has had not only on the Muslim community, but also on the wider community, irrespective of race, religion or background. As Muslims, we believe that we must show gentleness, compassion and concern towards all of humanity. We strive to uphold a high level of character, and believe that good moral character is of the finest ways to present Islam for what it is: a beautiful way of life for all.

We are privileged that at GLMCC we are able to work with a number of incredible people to further the reach of our impact and vision. Any kind of work at the masjid, be it a couple of hours of volunteering, cleaning up after events or more senior management roles are ultimately united by a single vision – to please Allah (swt). This shared goal serves as our ongoing motivation to continue to Inspire, Educate and Serve.

We thank Allah (swt) for allowing us to deliver a high volume of new and exciting projects this year. We pray that He accepts the efforts of the GLMCC team, which includes tens of staff members, and hundreds of dedicated volunteers. Finally, we thank you, our community, for your unwavering support. Without you, we would not be able to do what we are doing.



*MOHAMMED SAEED*

MOHAMMED SAEED  
CHAIR, BOARD OF TRUSTEES

## ADDRESS:

**Green Lane Masjid  
and Community Centre**  
20 Green Lane,  
Small Heath,  
Birmingham,  
B9 5DB

## CONTACT:

Telephone: **0121 713 0080**  
Email: **info@greenlanemasjid.org**  
Website: **www.greenlanemasjid.org**  
App: **app.greenlanemasjid.org**

## SOCIAL MEDIA:

Facebook: **@GreenLaneMasjid**  
Twitter: **@GreenLaneMasjid**  
Snapchat: **@GreenLaneMasjid**  
Instagram: **@GreenLaneMosque**  
Youtube: **@GreenLaneMosque**

Charity Reg. Number: **1125833**  
Company Reg. Number: **06552666**



# MESSAGE FROM THE CHIEF EXECUTIVE

Assalamu Alaykum,

Alhamdulillah (all praise is to Allah/God). We praise Him and seek His forgiveness. Whoever He guides, no one can misguide and whoever He leaves astray no one can guide. I testify that there is nothing worthy of worship except Allah (God) alone. And I bear witness that Muhammad is His servant and (final) messenger.

Our masjid was originally established in 1979 so this is our fortieth year. SubhanAllah (Glory be to Allah), who would've thought that after 40 years we would have an award winning masjid with so many services and activities, with work stretching across the globe and influencing so many mashAllah (God willed it).

Our elders originally had a vision to establish a masjid that truly served the people and would act as a beacon for the community. This was a reflection of the prophetic masjid in Medinah, where the Prophet Muhammad (peace be upon him) would house the homeless, feed the poor, educate people, collect and distribute the charity, bring the community together, lead their salah (prayers), facilitate ebadah (worship) etc.

My first year here has really been a time to understand all this great work. Alhamdulillah, at GLMCC we have over 40 major services and activities running simultaneously so there is a lot to learn.

This year, we launched many new services including a Monthly Elders Lunch, a Joint Pain Clinic, an Immigration Surgery, a Free Legal Surgery, a Food Kitchen, Homeless projects...to mention but a few. We have also restarted our annual Summer Conference, launched an Umrah service, increased the number of talks delivered, commenced supporting other masajid and much more.

We have also launched several social campaigns and through this work have sought to present the true image of Muslims in the media.

One of the things that has truly astounded me over the past year has been the unfaltering dedication of our staff, volunteers and key partners in the community. I can categorically say that this masjid could not function without the support of Allah and their dedication.

Finally, I would like to take this opportunity to thank all of you, who contribute through donations, kind words and du'a (supplication).

**May Allah accept everyone's efforts. Ameen**



*KAMRAN HUSSAIN*

KAMRAN HUSSAIN  
CEO, GREEN LANE MASJID



# THE CYCLE OF WORK THAT DELIVERS OUR VISION

## VISION

God in the lives of all



### 1. YOUTH & SOCIAL ACTIVITIES

- **Childrens Cricket club**
- Coffee Mornings
- **Sisters Basketball**
- Muay Thai - Thaiboxing
- **Scouts**
- Elders Lunch
- **Youth Summer Program**
- Sisters Events (Charity dinners, days out, social events)
- **Kids Football club**



### 2. WELFARE SERVICES

- **Foodbank**
- Food Kitchen
- **Zakat**
- Funeral Services
- **Counselling Services**
- Funeral Services
- **Street watch**
- Legal Surgery
- **Winter Freeze Project**
- Imam Q&A
- **Joint Pain Clinic**
- Immigration surgery
- **Job club**
- Cancer Support Group



### 3. DAWAH AND OUTREACH

- Talks
- **Conferences**
- Mosques Outreach Support
- **University Chaplaincy**
- Online Lectures
- **Publications (articles, booklets etc)**
- Open days
- **Exhibition Islam**
- School visits

## INSPIRE

## EDUCATE



# ION

ives of people



## 4. EDUCATION

- Madrasah /supplementary school
- Online Education
- Education Classes
- Budding Believers Club
- Kids Summer School



## 5. MASJID ACTIVITIES

- 5 Daily prayers
- Eid in the park
- Ramadan:
- Taraweeh
- Iftar and suhoor
- Itikaf
- Jumuah



## 6. HUMANITARIAN & SOCIAL CAMPAIGNS

- Humanitarian TaskForce
- Refugee Relocation Programme
- Annual Social Campaigns

CATE

SERVE



# 1. YOUTH AND SOCIAL ACTIVITIES

Every week at GLMCC, a number of social activities are held to inspire the overall development of the Muslim community in a spiritual and nurturing setting.



## GREEN LANE MASJID FOOTBALL CLUB

QUALIFIED UEFA B COACH AND ADDITIONAL COACHES TO SUPPORT

EACH SESSION HAS LIMITED PLACES AVAILABLE

REGISTRATION FEE IS £5 | 10% DISCOUNT FOR 12 MONTHS MEMBERSHIP

TUESDAY - COACHING SESSION	THURSDAY - COACHING SESSION	THURSDAY	SATURDAY - COACHING SESSION
Age: 8 yrs to 12 yrs	Age: 11 yrs to 14 yrs	Age: 13 yrs +	Age: 8 yrs to 12 yrs
Location: Small Heath Leisure Centre (Indoor)	Location: Heartlands Academy (Outdoor)	Location: Heartlands Academy (Outdoor)	Location: Heartlands Academy (Outdoor)
Timings: 6.00pm to 7.00pm	Timings: 8.00pm to 9.00pm	Timings: 9.00pm to 10.00pm	Timings: 12.00pm to 1.30pm

ALL UNDER 18'S MUST COMPLETE A REGISTRATION FORM SIGNED BY THEIR PARENT/GUARDIAN. Additional children from the same family will receive a reduction. Places require early booking.

FEE PER SESSION £4 FOR 90 MIN WEEKDAY SESSIONS | £5 FOR 90 MIN WEEKEND SESSIONS.

Parental Advice: No parents will be allowed in the training area. All parents MUST arrive 5 minutes before the end of the session to pick up their child.

Please contact [info@greentlanemasjid.org](mailto:info@greentlanemasjid.org) for any queries

20 Green Lane, Small Heath, Birmingham, B9 5DB | [info@greentlanemasjid.org](mailto:info@greentlanemasjid.org) | 0121 713 0080

[@GreenLaneMasjid](#) [@GreenLaneMasjid](#) [@GreenLaneMasjid](#) [@GreenLaneMasjid](#) [@GreenLaneMasjid](#)

## Big Moments

All Stars Cricket gives children the chance to play, learn great skills and meet new friends!

Green Lane Masjid & Community Centre  
20 Green Lane, Birmingham, B9 5DB  
Tel: 0121 713 0080  
Email: [info@greentlanemasjid.org](mailto:info@greentlanemasjid.org)  
Register at [allstarscricket.co.uk](http://allstarscricket.co.uk)

Includes Personalised Kit!

## THE BIG ELDERLY MEET UP

A MONTHLY SOCIAL GATHERING FOR THE ELDERLY

Are you aged 60 or above?

Would you like to meet new people, have fun and build long lasting relationships in a relaxed environment over a bite to eat?

Then come to the GLM elderly meet ups which happen on the first Saturday of every month.

Date: Saturday 15th June 2019  
Time: 2:00PM till 3:50PM

Bring a dish (finger food only) • Pick up and drop off service available

NO REGISTRATION IS REQUIRED

For more info please visit [www.greentlanemasjid.org](http://www.greentlanemasjid.org)





FOOTBALL CLUB ASSOCIATED WITH THE FA





## CRICKET

GLMCC held a six-week All Stars Cricket Programme in conjunction with the England and Welsh Cricket Board (ECB) for primary school children. The ECB also facilitated training for volunteers delivered by a trained coach, and awarded all of the children who participated with certificates upon completion of the cricket programme.

## BASKETBALL

Sisters' weekly basketball sessions are organised by GLMCC and held off-site. The weekly sessions promote the coming together of sisters in the community in an environment which is focused on fitness, activity and sports. Our weekly basketball helps to strengthen sisterhood through fun and light-hearted competition.

## FOOTBALL

Our kids weekly football club is associated with the FA. Young people are given the opportunity to practice and improve their football skills under qualified coaches. Our football sessions run three times a week and we try and create a safe environment where our young can excel.

## MUAY THAI THAIBOXING

Our weekly kickboxing class with a trained professional instructor encourages young people to focus on their fitness, confidence and self-defence in an energetic, fast-paced and enjoyable environment. Through holding sports based activities in the Masjid, youth are able to appreciate the multi-purpose function of a Masjid within a community. Not only does the Masjid afford them the opportunity to strengthen skills they're passionate about, it also provides them with a positive, encouraging and spiritual setting in which they feel welcomed and appreciated.











**OVER 22 SUMMER YOUTH EVENTS!**

## YOUTH SUMMER PROGRAM

**Over 3,000 youth have benefitted from programmes held by GLM Youth, with overwhelming positive feedback.**

GLM Youth is a youth led initiative that seeks to empower and serve young people. Over the summer of 2019, the youth team organised a total of 22 events, including workshops, interactive discussions and an exclusive mental health campaign. The youth team focus on five main areas:

- **Islamic education**
- **Social activities**
- **Careers and future planning**
- **Mental health and wellbeing**
- **Gangs and violence**

Within these areas; sleepovers, activity days, camping trips, life-skills workshops and sports based activities were organised to ensure that the youth within the community were offered a range of enjoyable, engaging and fun events during the school holidays. These events provided our youth with the opportunity to make new friends in a positive environment.

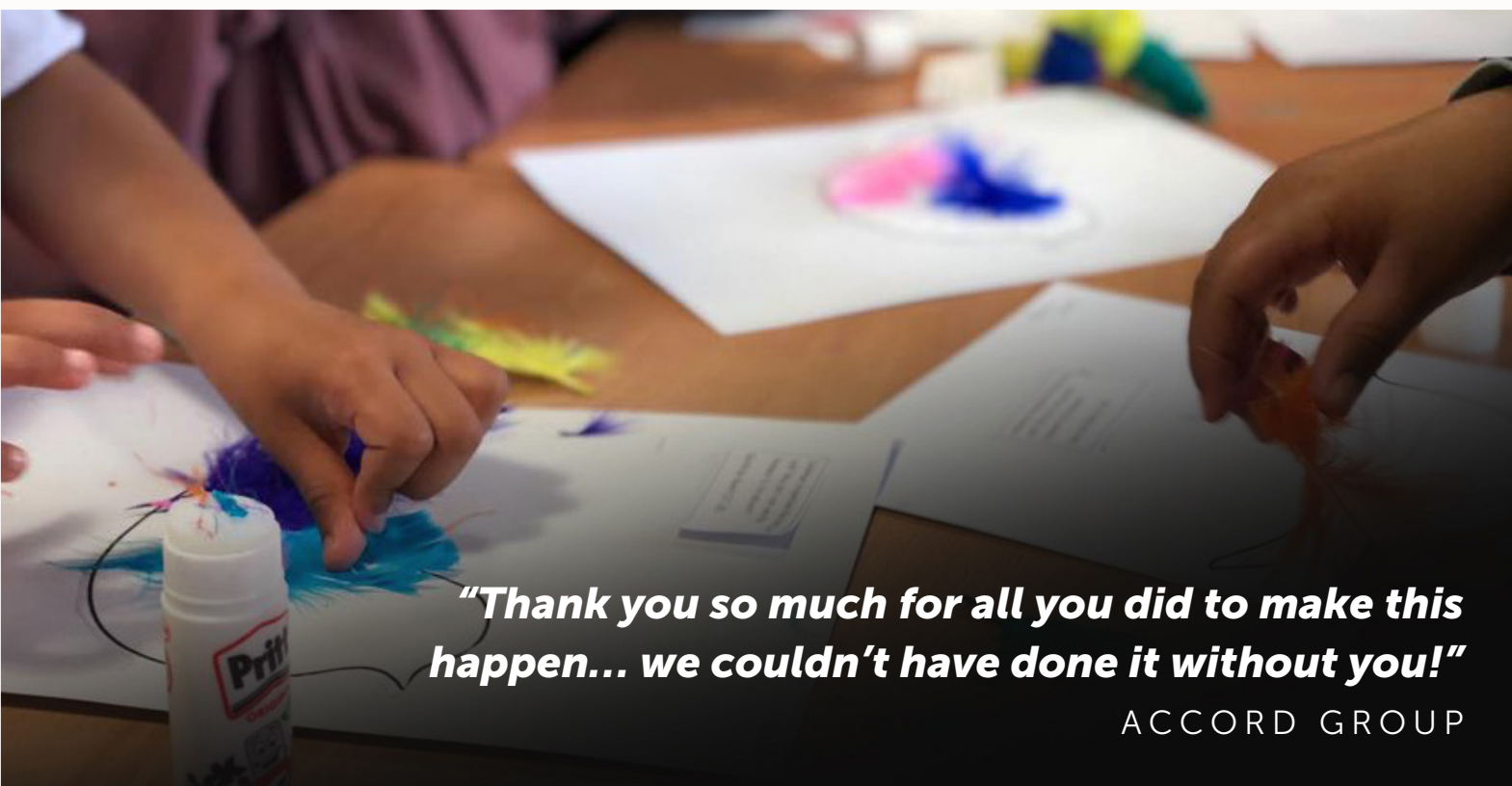






## 'HAPPY HEALTHY HOLIDAYS' SUMMER SCHOOL

In conjunction with the Happy Healthy Holidays consortium, Green Lane Masjid ran a 4-week summer school that was attended by over 200 children. The sessions included daily physical activity, healthy lunches, interactive games, wellbeing classes and much more.



**"Thank you so much for all you did to make this happen... we couldn't have done it without you!"**

ACCORD GROUP





## SCOUTS

**Our scouts group (GLM 309 Scouts) is the second largest in the region with over 130 children registered, and over 200 on the waiting list. GLM scouts held the first ever Muslim jamboree, raised over £30,000 for Syrian refugees, and have won regional awards.**

At GLMCC, along with our rigorous educational programmes, we aim to interweave a number of other activities in throughout the week in order to serve both the intellectual and social needs of the community. Scouts offers young people the opportunity to develop their life-skills, confidence and interests in an environment which is guided by positive role-models. In recent months, scouts have contributed towards GLMCC's homeless campaign by working on building sleep pods for the homeless.





OVER 130 SCOUTS!





## 2. WELFARE SERVICES

Islam is a religion that considers a person holistically, to ensure that they are in the best of health spiritually, physically and mentally.

The spirit of Islam is one that supports a person's progress and wellbeing in every sphere of life and society. For this reason, GLMCC is at the forefront of developing its welfare services, with over 14 services





***“Worship Allah and associate nothing with Him, and be (especially) good to parents, and to relatives, orphans, the needy, the near neighbour...”***

[ Q U R A N 4 : 3 6 ]



**HUNDREDS OF SERVICE USERS EACH YEAR**





## FOOD BANK

GLMCC's food bank is a community supported initiative helping an average of 30 people per week, with over 70% of service users not being from the Islamic faith.

The Masjid has partnered with local supermarket Morrisons, who hold a food-bin in store and provide other donations. A large number of food items are received from schools around the city for those in need.

We have also placed food bins in other local supermarkets and now receive grants for our food bank, which has reduced the reliance on financial donations.





# Is anyone there?

## Professional counselling and mentoring service.

We are here to help and facilitate positive change and enhance your well-being. So give us a call and let us help you achieve your goals.

Call us today &  
help us to help you!

Office Number: **0121 713 0095**

Email: **[info@greenlanemasjid.org](mailto:info@greenlanemasjid.org)**

## COUNSELLING

**In the modern age, we are beginning to witness a drastic increase in psychological and mental health issues.**

To address this crisis, GLMCC works with counsellors to offer professional counselling and support to the community. In 2019, GLMCC teamed up with a male GP to offer additional counselling to men.

Too often men are stigmatised for suffering with their mental health and therefore suffer in silence. To alter this reality, GLMCC encourage those who are suffering to step forward and seek help.





OVER £60K DISTRIBUTED LOCALLY EACH YEAR

## UK ZAKAH SERVICE (HARDSHIP FUND FOR THE NEEDY)

**A number of people are living in dire and vulnerable conditions in the UK, unable to meet the demands of daily life.**

Zakah is an obligatory charitable tax for Muslims, entailing that 2.5% of surplus wealth is donated every year. At GLMCC we utilise zakah funds to support those in need in the UK.

In 2019, we employed a part-time case worker to streamline the zakah process - who now reviews over 100 cases annually.

Alhamdulillah, we distribute £60-£80K every year to help those most in need with finding accommodation, paying rent, food-bank tokens, new furniture, household items, travel expenses, clothing and other essentials.





## FUNERAL SERVICE

The GLM Funeral Service (GLMFS) is a 24-hour subsidised funeral service with an on-site mortuary facility at Green Lane. GLMFS offers practical support to the bereaved family from the moment a loved one passes away, until the burial takes place.



GLMFS  
Green Lane Masjid Funeral Service

MULTITUDES OF MEN HAVE WALKED ON THE SURFACE OF THIS EARTH. They all belonged to different nations and cultures. A few of them made history for which they were remembered, whereas others were never to be mentioned again. Although each one was personally different from another; their habits, thinking and tastes differed;

THEY ALL HAD TWO THINGS  
IN COMMON, FIRST, THEY WERE ALL DELIVERED FROM THEIR MOTHER'S  
WOMB AND SECOND,

**they all tasted death.**

**24 Hr Service**  
**EQUIPMENT & FACILITIES**  
COLD STORAGE | GHUSL/WASH | MOVING & HANDLING EQUIPMENT  
MULTI PURPOSE AMBULANCE | COFFINS/CASKETS | THE SHROUD

**www.glmfs.co.uk**  
**0121 713 0099**  
**24 hour contact: 07582 762 237**







## OTHER WELFARE SERVICES

### IMAM Q&A

Imam Q&A operates four times a week, providing hundreds of hours of advice every year. GLMCC Imams are available to answer your questions, and offer individualised spiritual advice.

### KNIFE BANK

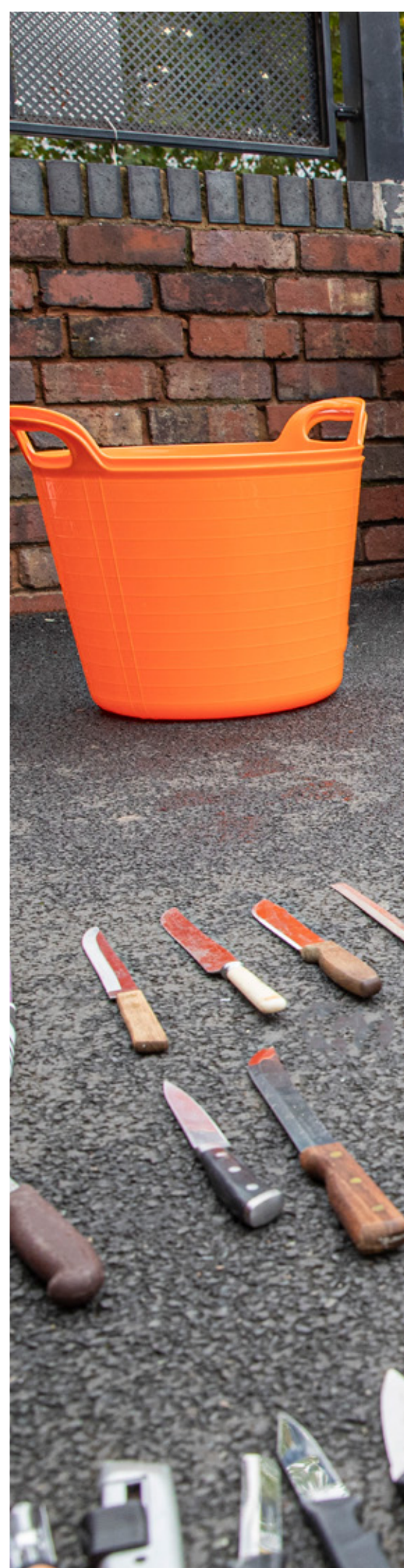
In 2019, over 80 weapons including a bullet were surrendered. Local media reported on the findings, and GLMCC continue to advocate for a reduction in knife-crime and street violence.

### COFFEE MORNING

Our weekly coffee morning sees an attendance of over 50 women. A number of women in attendance don't have access to safe spaces and therefore coffee morning offers them an opportunity to develop their faith, friendships and wellbeing.

### STREET WATCH

GLMCC are working with West Midlands Police to help deter crime in the local area. Street Watch volunteers patrol the area in groups, providing high visibility presence which has been shown to reduce the onset of crime. Volunteers are given free training, and are only asked to spare a couple of hours a month.









## NEW WELFARE SERVICES IN 2019

2019 has seen the launch of a number of new and exciting welfare services:



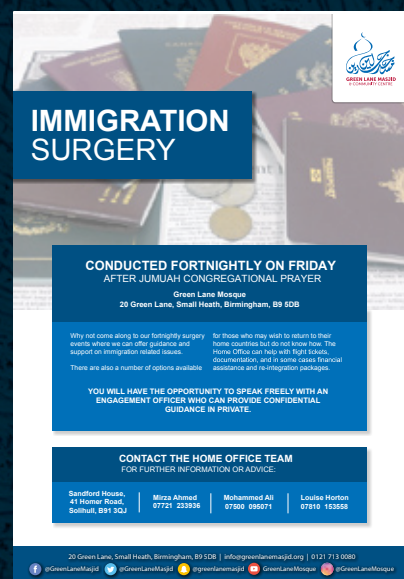
### JOINT PAIN CLINIC

GLMCC have partnered with a specialist orthopaedic surgeon to hold a monthly musculoskeletal and joint pain clinic. A range of issues such as joint problems, sports injuries, fractures and arthritis can be discussed in 15-minute consultations.



### FOOD KITCHEN

In the last year we have partnered with popular food-chain Greggs to provide meals for the homeless across Birmingham. The food kitchen operates three times a week, distributing 30 meals per session.



### IMMIGRATION SURGERY

GLMCC are working with the Home Office to offer a free fortnightly immigration surgery. The service is completely confidential, offering guidance to those who are facing obstacles with regards to their immigration status.





## CANCER SUPPORT GROUP

Working with Macmillan Cancer Support, GLMCC hold a monthly lunch and meet-up for those affected by cancer. Qualified professionals are present to support those who need advice, support or someone to talk to.



## LEGAL SURGERY

GLMCC have partnered with Aman solicitors who provide free weekly legal advice on-site. They offer support in issues related to immigration, civil litigation, landlord or tenant disputes.



## THE BIG ELDERLY MEET-UP

Our monthly social gathering for the elderly sees an attendance of approximately 50 people each session. The gathering gives our elders a chance to make new friends, enjoy some good food and have a relaxing afternoon with members of the community.



### 3. DAWAH - OUTREACH ACTIVITIES

This year we have created a new dawah team to focus on expanding our dawah/outreach activities. Our dawah team seeks to create awareness about the true teachings of Islam and educate our community and wider society. This is done through a range of activities including talks, khutbas (Friday prayer sermons) school visits, open days, exhibitions, Islamic conferences, weekend courses, writing and much more.

Additionally, GLMCC not only favours its own progress, but also seeks to be in the service of other mosques, local organisations and university Islamic Societies. As a result of decades of experience and growth, we are now at a stage where we can share our good practice by offering training, consultations and support to mosques around the country. Currently, we support eight mosques with their Dawah (presentation of Islam) and governance frameworks, as well as delivering hundreds of sermons across a number of mosques throughout the year.

## SUMMER CONFERENCE

2019 saw the return of GLMCC's popular Summer Conference. Featuring international speakers from across the world and thousands of attendees, the topic of the conference this year was 'I Choose Islam'. Attendees left feeling inspired and empowered to practice their faith in the 21st century.

Lectures and workshops covered themes such as unity, youth, mental health, respecting parents, being a balanced Muslim, spirituality among the salaf (pious predecessors) and the life of the prophet (peace be upon him).







## WINTER CONFERENCE

GLMCC held its 10th annual winter Knowledge Conference in 2019. Scholars of the highest calibre from the Muslim world travel to the UK to teach dedicated attendees from across Europe the fundamentals of Islam. This year, topics included manners and morals in Islam, business transactions, how to pray correctly, and Aqeedah (theology).

The conference gives Muslims in the West the opportunity to connect with classical methods of studying Islam, in order to appreciate the vast history and scholarship across the tradition. Both summer and winter conferences are some of the most greatly anticipated events of the year.











The prophet (peace be upon him said):

***"Whoever directs someone to good,  
will gain the same reward as the one who does good"***

(M U S L I M)



# SISTERS TARBIYYAH (DEVELOPMENT & TRAINING)

## Danger of 6: Knowing your enemy

Tarbiyyah day focussing on some of the traps of Shaytan (Satan)

## Welcome Ramadan

Urdu seminar discussing the virtues of Ramadan

## It's Time

Sisters conference with international speakers

## Lessons from Surah Saff

Urdu seminar covering some key lessons from a chapter of the Quran

## COVID -19: The Survival Guide, Sisters Webinar

With many Muslims affected by the isolation of lockdown, we arranged a faith boosting webinar to help those struggling with the lockdown

## Surah Kahf. THE GUIDING LIGHT

### A 12 Week Tafseer & Tilawah Course.

Sisters Tarbiyah bring you a very special course taking you to the depths of this beautiful Surah to understand its meaning and the lessons we can learn from it as well as the correct way of reciting it.

'Whoever reads Surat al-Kahf on the day of Jumu'ah, a light will shine for him from beneath his feet to the clouds of the sky, which will shine for him on the Day of Resurrection, and he will be forgiven (his sins) between the two Fridays.'

(al-Targheeb wa'l-Tarheeb, 1/298)

### Starting On 7th October

Every Monday 12:20-2.20pm



Registration Fee  
**£40**  
includes a special  
course book

Enquiries: [sisters.tarbiyah@greenlanemasjid.org](mailto:sisters.tarbiyah@greenlanemasjid.org)



## GLMCC SISTERS CONFERENCE

### SISTERS TARBIYAH - NURTURING THROUGH KNOWLEDGE



# IT'S TIME

Throw off the shackles of the dunya  
and set yourself free

#### SPECIAL GUEST SPEAKERS

NAIMA B ROBERT  
USTADHA YASMIN ISHAQ

3<sup>RD</sup> NOVEMBER  
10.30AM - 4.00PM

Sisters only • No boys over 8 • No registration fee



### Islam Essentials

Islamic Studies course covering core essentials including; belief, jurisprudence and much more

### Bow Down

A course covering the A-Z of salah (prayer)

### The Guiding Light

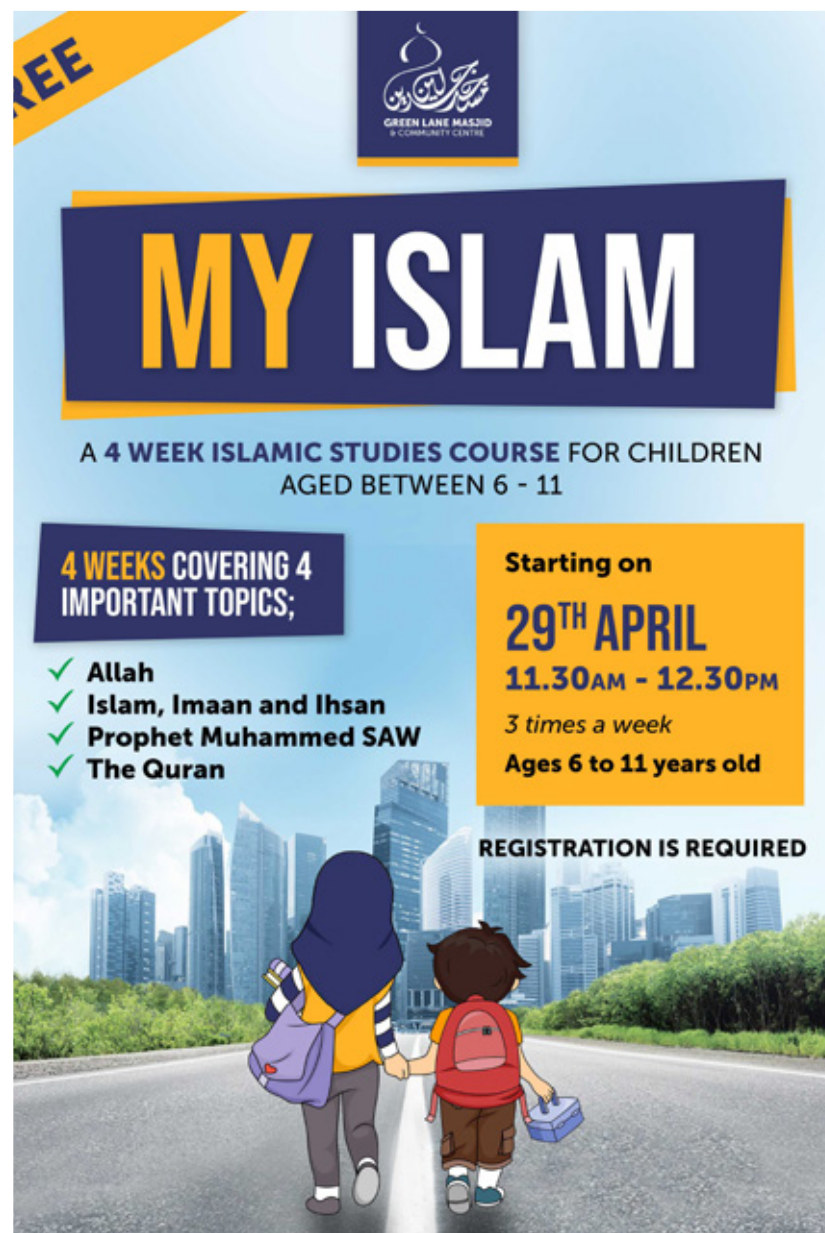
A study on surah Al-Kahf - the chapter of the cave - including tafseer and tajweed (commentary and pronunciation)

### Sisters Friday Majlis, Weekly study circle

Every Friday a group of sisters would get together and cover topical issues

### Daura-e-Quran/Journey through the Qur'an; Urdu Tafseer Course Ramadan 2020

A 90 hour programme going through an in-depth study of the Quran.



**FREE**

**MY ISLAM**

A 4 WEEK ISLAMIC STUDIES COURSE FOR CHILDREN  
AGED BETWEEN 6 - 11

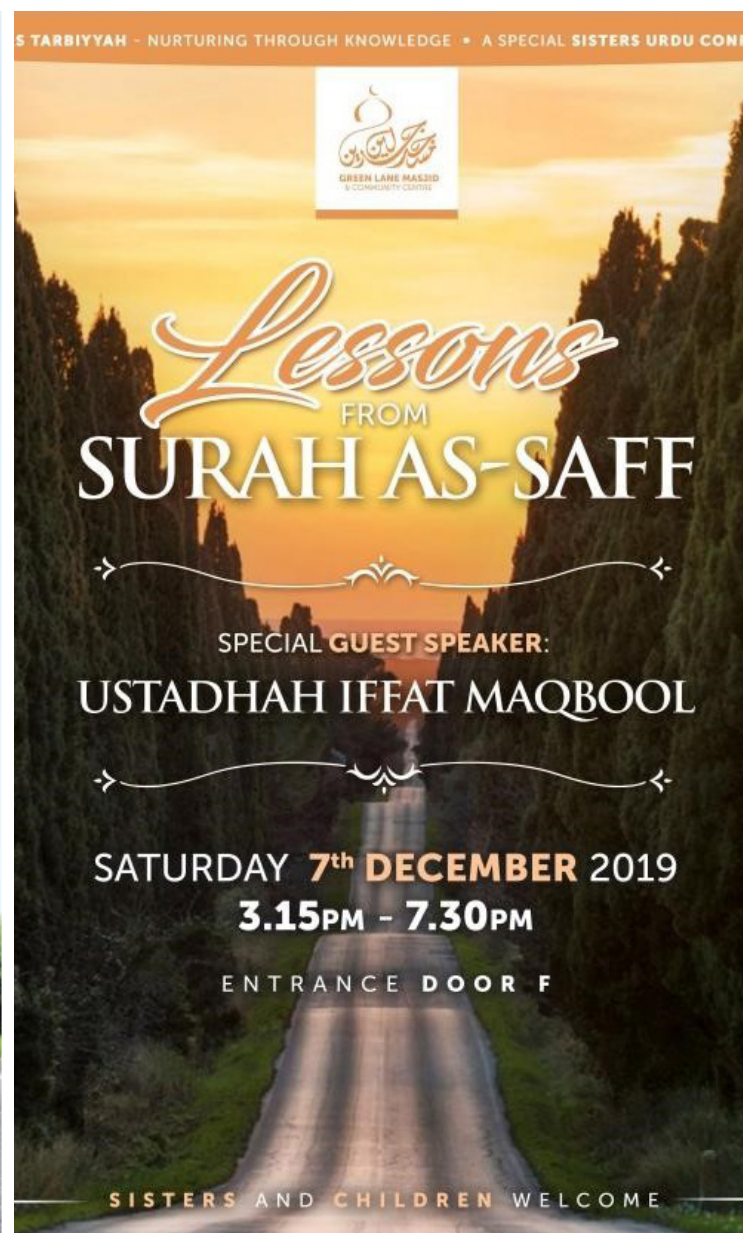
**4 WEEKS COVERING 4  
IMPORTANT TOPICS;**

- ✓ Allah
- ✓ Islam, Imaan and Ihsan
- ✓ Prophet Muhammed SAW
- ✓ The Quran

**Starting on  
29<sup>TH</sup> APRIL  
11.30AM - 12.30PM  
3 times a week  
Ages 6 to 11 years old**

**REGISTRATION IS REQUIRED**

Illustration of a girl and a boy walking towards a city skyline.



S TARBIYYAH - NURTURING THROUGH KNOWLEDGE • A SPECIAL SISTERS URDU CON

**Lessons  
FROM  
SURAH AS-SAFF**

SPECIAL GUEST SPEAKER:  
**USTADHAH IFFAT MAQBOOL**

**SATURDAY 7<sup>th</sup> DECEMBER 2019  
3.15PM - 7.30PM**

ENTRANCE DOOR F

SISTERS AND CHILDREN WELCOME



## INTENSIVE WEEKEND COURSES

---

At a subsidised rate, GLMCC offer exclusive quarterly weekend courses with world renowned lecturers.

We offer the community a unique opportunity to learn through these structured courses with some of the best Islamic educators, in a way that is accessible for everyone.





## PRESENTATIONS AND OPEN DAYS

---

In 2019, GLMCC invited the community and its partners to various events to showcase our work.

Impactful stories from service beneficiaries, activities for children and presentations were delivered highlighting the breadth of our work.



***"The event was eye opening and allowed us to see that the Mosque plays a vital role in providing positive services to the individuals of the community."***

MORRISONS





# ANNUAL GA WITH KEY





# ALA DINNER PARTNERS





# SCHOOL VISITS

We welcome all schools, educational establishments and other organisations for a guided tour of the mosque and an introduction to Islamic beliefs and practices. In 2019, we hosted a number of the visits in conjunction with Exhibition Islam to provide a more interactive event.





## HISTORY OF THE BUILDING

The GLMCC building is Grade II listed building with a rich history dating from the late 1800's



REGULAR SCHOOL VISITS AND TOURS



# EXHIBITION ISLAM

Exhibition Islam is a world renowned exhibition organisation that works in partnership with GLMCC. The organisation has toured the world with its Islamic exhibitions and its work helps to promote a greater understanding of Islam by utilising alternative educational resources.

Rare Islamic artefacts are used to deliver professional museum style exhibitions, and to pay homage to the rich cultural heritage of Muslims.

In the past two decades, Exhibition Islam has attracted over 1.3 million visitors, establishing its name as the leading Islamic exhibition provider in the world. Exhibitions have been held at over 1300 venues across the UK, including Buckingham Palace. A number of exhibitions have also taken place overseas in countries including Denmark, Qatar and South Africa. At an exclusive exhibition held in Norway, the Queen of Norway attended to inaugurate the event.





## THOUSANDS ATTEND OUR ANNUAL OPEN DAYS AND EXHIBITIONS



***"..it really was very well organised. Members were thrilled to be treated to the tour after the formal proceedings and it was kind of you to ask us to witness the daily prayers."***

VICTORIAN SOCIETY



## OTHER DAWAH ACTIVITIES

## MASJID OUTREACH

We empower many of masaajid (mosques) with speakers, joint statements, shared best practice etc.

## INTERFAITH WORK

We hold regular visits to the masjid from other faith groups.  
We also attend various interfaith working groups.

# GLM TV

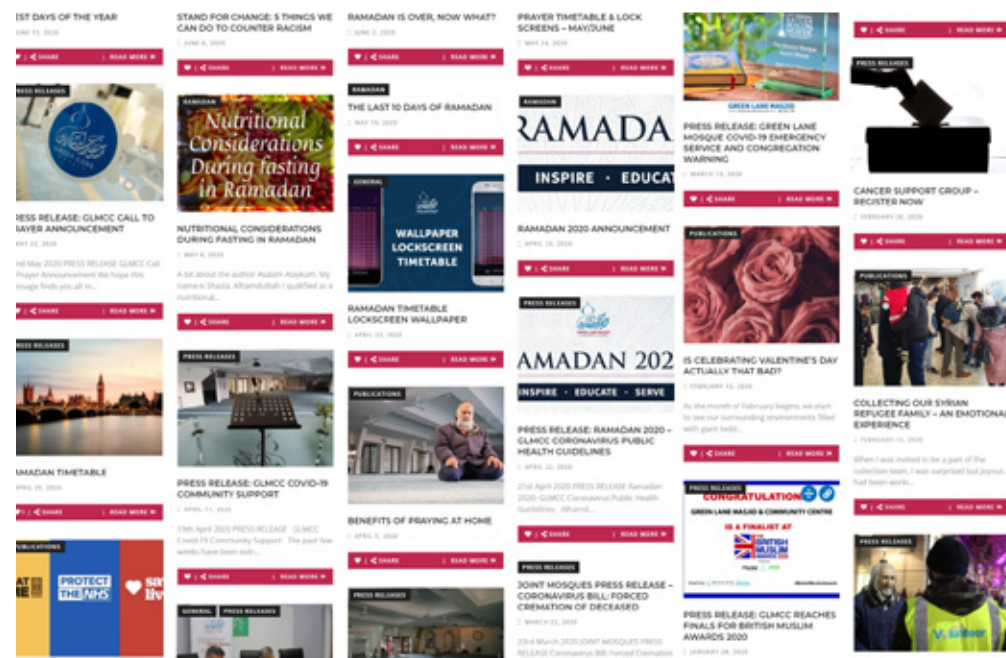
We stream hundreds of talks online every year, we have over 100k followers on youtube and growing!

## REGULAR TALKS AND KHUTBAH

We deliver over 250 talks and khutbahs across the country each year.

## ARTICLES AND SOCIAL MEDIA

We regularly write articles and social media posts addressing issues pertinent to the Muslim community.







## HUNDREDS OF TALKS DELIVERED ANNUALLY IN MOSQUES AROUND THE COUNTRY

***"I would like to thank you,  
jazaka Allahu khayr for this amazing weekend.  
The conference was excellent, very well organised."***

FEMALE CONFERENCE ATTENDEE





## 4. EDUCATION

The vision of the Education department is to promote the pristine knowledge of Islam to learners of all ages by developing dynamic individuals who can benefit society by contextualizing their understanding of the religion.

We provide a range educational services and classes, catering to all ages and abilities.

These include:

- Online classes conducted over Zoom
- Over 60 on-site classes a week
- A weekly children's evening school (Madrasah),
- A monthly Budding Believers Club for children
- An annual childrens summer school



**The prophet** (peace be upon him said):

***"If anyone pursues a path in search of knowledge, Allah will make easy for him a path to paradise."***

SUNAN ABI DAWOOD 3643






OVER 60 EDUCATIONAL CLASSES  
CONDUCTED FROM GLMCC EACH WEEK





# OVER 400 CHILDREN TAUGHT AT MADRASAH





## MADRASAH

### PLACES AVAILABLE

We have spaces available in years 1, 4, 5, 6, 7 & 8, at our evening madrasah.

FOR BOYS AND GIRLS

- STATE OF THE ART CLASSROOMS
- EXPERIENCED TEACHERS THAT DELIVER FUN, INFORMATIVE AND DYNAMIC LESSONS.
- STUDENTS ARE TAUGHT QUR'AN AND ISLAMIC STUDIES.

MONDAY TO THURSDAY • 5.00PM - 7.30PM

For more information on how to apply for a place, please call the Madrasah Office on 0121 713 0092 (5.00 pm - 7.30 pm) or alternatively you can contact us via email [madrasahadmin@greenlanemasjid.org](mailto:madrasahadmin@greenlanemasjid.org)

20 Green Lane, Small Heath, Birmingham, B9 5DB | [info@greenlanemasjid.org](mailto:info@greenlanemasjid.org) | 0121 713 0080

[@GreenLaneMasjid](#) [@GreenLaneMasjid](#) [@GreenLaneMasjid](#) [@GreenLaneMasjid](#) [@GreenLaneMasjid](#)

## MADRASAH (SUPPLEMENTARY SCHOOL)

The GLMCC Madrasah is an Islamic Supplementary Evening School with over 400 students currently in attendance.

We offer Islamic Studies, Quran recitation and Quran memorisation classes in a fun yet focused setting. The environment we have created is one that is caring and secure for young people.

We endorse excellent manners and nurture what we hope will be future leaders who will positively contribute to British society.

By working collaboratively with a child's best interest at heart, we aspire to produce successful, happy and confident Muslims. Together, we are able to offer a unique education to our children.





## EDUCATION CLASSES

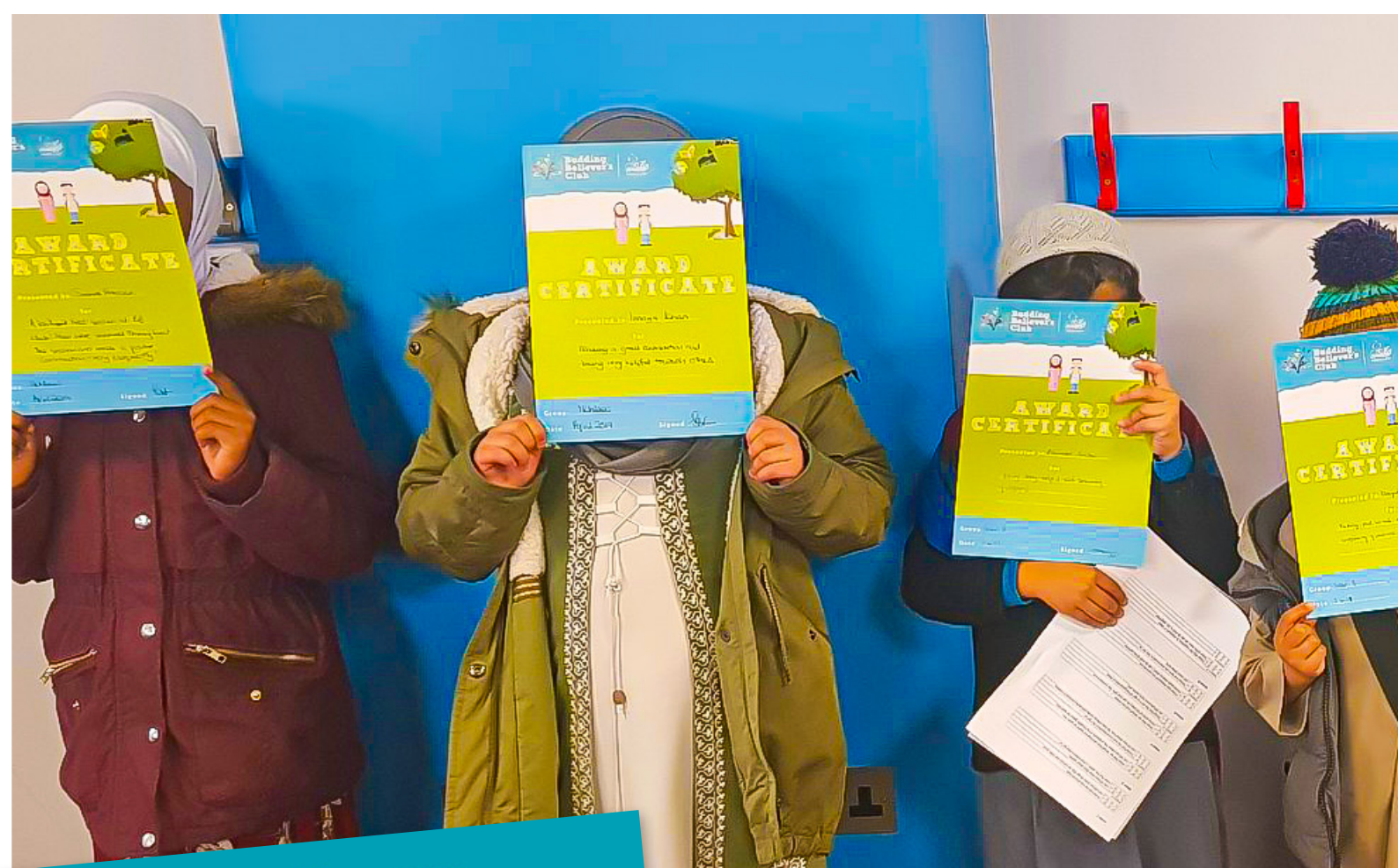
**Our Education department is committed to ensure that all learners at GLMCC study with an ethos of high aspirations.**

With over 60 classes running per week, we instil this through focusing on academic achievement, personal development and character refinement. Our curriculum is broad and innovatively designed to ensure that students are engaged and inspired.

We employ over 50 teachers to deliver classes, seminars and specialised courses on a range of topics, including theology, Islamic jurisprudence and Qur'anic exegesis. Though our courses are largely faith based, we are keen to develop dynamic and well-rounded individuals who can benefit society through the skill of being able to contextualise their understanding of Islam.







**Budding Believer's Club**  
GREEN LANE MASJID

**Our sessions this term**

SUNDAY 1 <sup>ST</sup> MARCH 2020	SUNDAY 7 <sup>TH</sup> JUNE 2020
SUNDAY 5 <sup>TH</sup> APRIL 2020	SUNDAY 5 <sup>TH</sup> JULY 2020
SUNDAY 3 <sup>RD</sup> MAY 2020	SUNDAY 2 <sup>ND</sup> AUGUST 2020

Drop off time 9.45am Door E • Pick up time 12.30pm Door F

**DON'T FORGET YOUR SNACK FOR BREAK TIME**

**Topics we will cover this term**

<b>SABR A - RECEPTION</b> NAMES AND ATTRIBUTES OF ALLAH STORIES OF THE PROPHETS	<b>IHSAN - YEAR 2</b> PILLARS OF IMAAN KNOWING ALLAH THROUGH HIS SIGNS
<b>SABR B - YEAR 1</b> LOVING ALLAH AND HIS CREATION ANIMALS FROM THE QUR'AN	<b>SHUKR - YEAR 3</b> AHADITH MUSLIMS FROM AROUND THE WORLD
<b>TAQWA/KHLAAS - YEAR 4-6 BOYS/GIRLS</b> TAFSEER MUSLIM CONTRIBUTIONS TO THE MODERN WORLD	

**Pre registration is required**

Contact [bbclub.head@greenlanemasjid.org](mailto:bbclub.head@greenlanemasjid.org) for more info

20 Green Lane, Small Heath, Birmingham, B9 5DB | [bbclub@youngummah.org](mailto:bbclub@youngummah.org) | 0121 713 0080

@GreenLaneMasjid @GreenLaneMasjid @GreenLaneMasjid @GreenLaneMasjid

## BUDDING BELIEVERS CLUB

One of our most popular initiatives at the Masjid, is the Budding Believer's Club. The club was established in 2013 for primary school children, and since, has been running once a month on Sunday mornings.

Currently, sessions are delivered to over 150 children by a brilliant team of qualified teachers and experienced volunteers. The children arrive eager to enter into lively sessions, in which love for Islam is inspired through creativity, discussions and role-play.

**Budding Believer's Club**

**SUNDAY 2<sup>ND</sup> FEBRUARY 2020**

Drop off time 9.45am Door E • Pick up time 12.30pm Door F

**DON'T FORGET YOUR SNACK FOR BREAK TIME**

**Pre registration is required**

Contact [bbclub.head@greenlanemasjid.org](mailto:bbclub.head@greenlanemasjid.org) for more info





## OVER 150 CHILDREN TAUGHT IN OUR MONTHLY WEEKEND SCHOOL





## 5. MASJID ACTIVITIES

**The primary function of a Masjid is to serve as a place of worship.**

We do this through the five daily prayers, the Friday Jumuah (congregational prayer), the many activities over ramadan and our annual eid salahs. Our congregation is spectacularly vibrant, with a diverse range of ages, races and backgrounds.



**OVER 200 WORSHIPPERS  
FOR EVERY PRAYER**





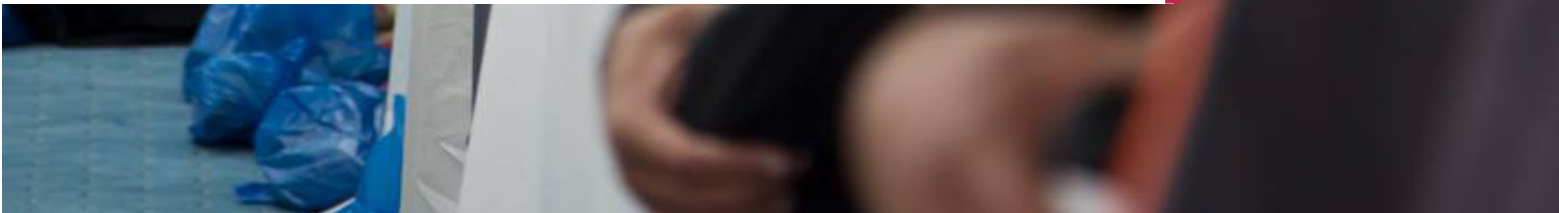
***"Alhamdulillah for all the Green Lane Masjid team for everything you provide to the ummah. Very well organised, there is so much to mention. May Allah reward you."***

FEMALE ATTENDEE AT RAMADAN





## THOUSANDS ATTENDING JUMUAH PRAYER EVERY FRIDAY



### JUMUAH (FRIDAY) PRAYERS

GLMCC hosts a congregation of over 3,000 people every Friday for the weekly sermon and prayer.

Our imams (clerics) deliver insightful speeches, educating our community and addressing key issues.







## RAMADAN ACTIVITIES

In Ramadhan, Muslims around the world fast for an entire month. From dawn until dusk Muslims abstain from food, drink and marital relations. Every night in Ramadhan, over 2000 people visit GLMCC to perform the night prayer, Taraweeh.

During Ramadhan, the Masjid also serves food (iftar) every night to those who have been fasting, with an average of 350 people collectively. On some of the busiest nights, we host over 1000 attendees for Iftar and Suhoor (pre-dawn meal).

We also accomodate an average of 60 people for seclusion in the mosque (itikaf) for the last ten days of ramadan.







## CELEBRATE EID

**GLMCC are the founders of Celebrate Eid, an event which has established itself as the largest outdoor Islamic event in Europe, with 60k - 80k people in attendance.**

It is estimated that over a quarter of Birmingham's Muslim population come together to share in the festivities, food and fun!

A number of mosques across Birmingham support the Celebrate Eid event with their Imams and congregations attending to celebrate the joyous day. Local politicians, West Midlands Police and respected Imams work together to facilitate, support and enliven this celebratory day for the Muslim community.







## LARGEST OUTDOOR ISLAMIC EVENT IN EUROPE





## 6. HUMANITARIAN WORK AND SOCIAL CAMPAIGNS



### TASKFORCE GLM

In 2019 alone, Task Force GLM (TFGLM) have raised £1.6 million for humanitarian causes. On the busiest night of Ramadhan earlier this year – the 27th night – an outstanding £400,000 was raised within a couple of hours.

At GLMCC, we aim to promote the altruistic essence of Islam by serving the needs of humanity to the best of our ability. Our humanitarian arm provides life-saving support to orphans and those in need across the globe.

Key TFGLM projects include an orphanage in Lebanon, the Syrian Bread Project producing tonnes of bread for displaced Syrians, the Winter Food Parcel programme, water filtration plants, water wells, qurbanis and more.





# TASKFORCE GLM 2019 PROJECTS

**£2.1 MILLION DONATED**



**1000**  
TONNES  
BREAD



**23,072**  
FOOD PARCELS  
(SYRIA, YEMEN, PALESTINE,  
LEBANON, MYANMAR, JORDAN)



**335 | 100**  
ORPHANS | WIDOWS  
SUPPORTED  
(Lebanon, Sudan)



**235**  
QURBANIS  
(MYANMAR)



WINTER AID FOR  
**4500**  
FAMILIES  
(SYRIA, JORDAN)



**331**  
SHELTERS  
(IRAQ, MYANMAR)



DISABILITY  
CENTRE SUPPORT  
(ARSAL, LEBANON)



**10** COMMUNITY WATER  
FILTRATION PLANTS  
(PAKISTAN)



**25**  
SOLAR STREET  
LIGHTS  
(MYANMAR)



DRINKING  
WATER POND  
(MYANMAR)



**17** PALESTINIAN  
REFUGEE HOUSES  
REBUILT/RENOVATED  
(GAZA CAMP, JORDAN)



**SHELTER AND  
HYGIENE KITS**  
(MIRPUR EARTHQUAKE RESPONSE)

DONATED BY YOU, DELIVERED BY US  
**WWW.TASKFORCEGLM.ORG**





In just six years, TFGLM have raised over £6.6 million supporting thousands of people across the world. The team is run entirely by a group of volunteers who work tirelessly to deliver aid in just under twenty countries.

TFGLM engages with the entire community by holding a number of events to showcase its work, educate, and raise awareness on global crises.

A number of fundraising dinners are organised by the team over the year, attracting hundreds of people, with tens of thousands raised for humanitarian causes at every event.





## SYRIAN RELOCATION PROGRAMME

In 2013 the British government committed to resettle 20,000 Syrian refugees through the Syrian Vulnerable Persons Resettlement Scheme.

Those in the direst need were to be prioritised in this scheme. Alhamdulillah, TFGLM has helped to relocate a Syrian family to the UK through this scheme, and was responsible for funding their housing, core needs and ensuring they settle into the community.

TFGLM look forward to supporting and welcoming more families in the future inshaAllah.



Working Together to Rebuild Syrian Lives.

## SPONSOR AN ITEM

HELP MAKE YOUR NEW FAMILY'S HOUSE A HOME

Earn the reward today and sponsor one of the following items for your new family:

- |       |               |           |
|-------|---------------|-----------|
| Sofas | Dining Tables | Wardrobes |
| TV    | Accessories   | Rugs      |
| Beds  |               |           |

Send us a message **+447858150671** or email **info@greenlanemasjid.org** with the name of the item you would like to sponsor and the amount.

THE PROPHET ﷺ SAID:

*"None of you will believe until you love for your brother what you love for yourself."* (BUKHARI)





# CASE STUDIES



## ***"I was homeless and eating out of bins"***

- Desperate reality of living on the streets of Birmingham

"I was living a pretty good life. I had a wife, three kids and a good job as a carpenter. Things were stable, and I was content. In a matter of moments however, my world was turned upside down. My wife left me and my marriage just fell apart. I was severely depressed and in a state of shock. Things got so bad that I ended up sleeping on the streets. To hide my homelessness from my kids, I would shower in local leisure centres and tidy myself up before visiting them.

I was completely alone and invisible. When you're homeless, it's surprisingly easy to stay out of people's way. It's as though people didn't know I existed. No one really saw me. To survive, I had to eat out of bins. One night, someone tried to set fire to my sleeping bag while I was asleep. I was also spat on, called names, kicked and hit.

Somehow, I ended up here, at GLMCC. This place has honestly saved my life. I didn't think I'd ever manage to get off the streets, but I've been supported from the moment I got here. They have housed me, fed me, and managed to get me into permanent accommodation. I'm finally off the streets and doing so much better now. My life has been transformed. Thank You."

***Kieron Goble***





## ***“GLMCC became my second home”***

---

**“I was raised in a very happy household. My parents and siblings were my best friends and we were always very close. My parents worked extremely hard to support us and held strict family values, yet were always very loving.**

As a student, I did whatever I liked. I worked hard, lived in a luxury apartment, and established my career as an English teacher. Then, I became a Muslim. My parents were outraged. Within two hours, they disowned me, and the silence still continues 11 years on. My mother said that I had shamed and disgraced them. I had chosen a religion that the world hates. I was heartbroken.

Suddenly, I was subjected to isolation, rejection, and the frightening reality of Islamophobia. In this time of pain and confusion, I found some very precious friends. The community at GLMCC have become my family. They have welcomed me, listened to me and helped me at my most vulnerable point. Though nothing can replace the love of a mother or father, I have found friends who treat me with a loving sincerity and gentleness that eases my sadness.

I have felt spurts of newfound happiness emerging within. Islam has given me strength, and GLMCC have supported me at a time when I felt not even one person in the world was on my side.”

***Anonymous***





***“This foodbank is the best foodbank I’ve ever known.”***

Saira is one of our foodbank users. She is a former victim of domestic violence and had to previously flee her home to safety. Alhamdulillah she is a convert to Islam and is currently in remission from cancer.

She was struggling and was directed to the GLMCC foodbank for support.

Alhumdulillah she is extremely grateful to GLMCC and the volunteers for their courtesy and for listening attentively to her needs.

***Sister Saira***





***“I want to thank everybody.. you saved his life..”***

**- Voicemail from Mark’s mother to GLMCC**

Mark was homeless and living on the streets for months. He attended our winter freeze campaign where he was housed and fed over the cold winter. One night our lead volunteer noticed that Mark had a hand injury.

Alhumdulillah that night some local nurses had heard of our work and turned up to help by performing medical check ups of the homeless. The nurses immediately requested an ambulance to take him to hospital.

His wound was found to be septic, which required several immediate operations. The doctor commented that if Mark hadn’t made it to the hospital that night (by the Mercy of God/Allah), there was a good chance that he would’ve died.

The GLMCC team were able to help Mark find housing, get access to benefits and reconnect him with his family. His mother wept when she heard his situation.

***Mark***



# ANNUAL SOCIAL CAMPAIGNS 2019

## SOCIAL CAMPAIGN 1 WINTER FREEZE



Last winter at GLMCC, we opened up our doors to shelter the homeless. For four weeks during freezing weather conditions, we provided free food, snacks and hot drinks, as well as a warm place to stay overnight. An average of fifteen people were fed and homed every night, with up to twenty-five people on the coldest and busiest nights.

Additionally, food-parcels were distributed across the city centre, with hundreds fed and given clothing and blankets over the period. We were also able to support ten people in getting off the streets and into housing.

We aim to inspire God (Allah) consciousness in the hearts and minds of people. We hope to do this by following the prophet's example of not only caring for our brothers in faith, but also, our brothers in humanity.







# FOUR WEEK CAMPAIGN TO HOUSE AND FEED THE HOMELESS DURING FREEZING CONDITIONS

NEWS   REVIEWS   COMMUNITY   SHOWBIZ

## Birmingham mosque opens doors to city homeless as temperatures plunge

**IAM BHAM** Staff Reporter   3 February 2019 10:40:00 pm



**Birmingham** live and open

NEWS ▾ IN YOUR AREA   BLACK COUNTRY   VILLA   MORE ▾

They're back! Supporting Birmingham & Black Country businesses you've missed so much

FUNERAL NOTICES   JOBS   MENTAL HEALTH   FOOTIES   ADVERTISING   VOUCHER CODES   DIRECTORY   EATING   BOOK AN AD   BUY A PHOTO   #OO

### Mosque opens doors to Birmingham homeless suffering on freezing streets

Green Lane Masjid appeals for more volunteers to help look after rough sleepers coming in off streets

SHARE 46816 SHARES   COMMENTS   By **David Bentley**   16:17, 4 FEB 2019   UPDATED 17:16, 13 MAY 2019

NEWS

A Birmingham mosque has opened its doors to homeless people who are suffering in freezing temperatures on the city's streets.

**Green Lane Mosque and Community Centre** has launched a winter freeze project to help protect the homeless as temperatures fall to zero and below during the current cold snap.

The idea came from Humayun Saleem, head of welfare services at the centre, who is concerned about the increasing number of homeless people on the streets in the bitterly cold weather.

**B READ MORE**

▶ The amount of rough sleepers has fallen - but it's not as good as you think

The project launched two weeks ago and as soon as the mosque opened its doors on the first night, four homeless people took advantage of the scheme.

By the third night, there were 12 homeless people who had made their way to the warmth of the mosque as rain set in and word spread.







***"Well done ... helping to change the city  
for the better and for the next generation."***

DIRECTOR | ECOBIRMINGHAM

## SOCIAL CAMPAIGN 2 ENVIRONMENTAL CAMPAIGN

---

**The accumulation of plastic waste has an incredibly adverse effect on the environment, putting the lives of living creatures at risk.**

On average, every night during Ramadhan, 800 plastic water bottles would be distributed to our congregation during iftar and evening prayers. This resulted in a colossal amount of plastic waste.

To counter this, working with ecobirmingham we developed our own reusable water bottles, available to purchase on site. This initiative dramatically reduced our plastic waste, while also enabling us to educate our congregation on the harms and dangers of plastic usage.

Many other mosques have followed suit and we now hope this initiative will encourage more environmentally-friendly Ramadans in the future.





# GREEN LANE MOSQUE AND COMMUNITY CENTRE IS GOING GREEN THIS RAMADAN!

*"...And waste not by excess: for Allah does not love those who waste (by extravagance)"*

SURAH AL-AN'AAM, AYAT 141

- During past Ramadans, GLMCC has distributed plastic water bottles every night, creating an incredible amount of plastic waste.
- Skips have had to be hired over Ramadan to remove the huge amount of empty water bottles.
- This year, GLMCC have teamed up with EcoBirmingham to consider our environmental impact and have decided to reduce our plastic waste.
- At the recent GLMCC community day, Michael Addison - Director of ECOBirmingham, spoke passionately about the harms of plastic waste and the need for communities to do more.
- In the UK alone, we have trillions of plastic bottles used every year, which then fill up landfill sites.

- Over Ramadan, Green Lane Mosque and Community Centre is visited, on average, by over 3,500 people every night and over 5,000 people on the weekends and busier nights. We estimate that we distribute an average of 500 to 700 bottles every evening in Ramadan.
- With this in mind, GLMCC have taken the decision to reduce the issuing of plastic water bottles over Ramadan.
- Instead, reusable bottles will be made available to the congregation at a subsidised price.
- We are also installing water fountains as filling stations but recommend everyone fills their bottles at home to prevent queues and any potential mess.

**PLEASE SUPPORT OUR CAMPAIGN TO REDUCE PLASTIC WASTE!**

HERE ARE SOME **FACTS** ABOUT PLASTIC POLLUTION:



- Plastic pollution can now be found on every beach in the world.
- Plastic can take up to 500 years to decompose.
- Over 50% of litter found on UK beaches in 2008 was plastic litter.
- 75% of post-consumer plastic waste is sent to landfill.
- Every day approximately 8 million pieces of plastic pollution find their way into our oceans.
- More than 40 species of fish, globally, are harmed by consuming plastic.
- 100,000 marine mammals, turtles and 1 million sea birds are killed by marine plastic pollution annually.



## OVER 80 WEAPONS SUBMITTED AT OUR KNIFE BANK



## SOCIAL CAMPAIGN 3 ANTI-KNIFE CRIME

Earlier this year, GLMCC ran an anti-knife crime campaign. The campaign began with a hard hitting youth flash-mob event. Upon completing their Friday prayer, congregation members left the mosque to be greeted by over 50 youth lined up outside the mosque and adjacent streets holding up placards with heart-breaking stories and horrific statistics related to the relentless nature of knife crime.

The campaign saw extensive media coverage from the BBC, ITV News, Birmingham Mail, Free Radio and others. In an effort to raise awareness on knife crime within the wider community, we also organised a billboard campaign around the city, to further the reach of the campaign, which resulted in the surrender of over 80 weapons in our knife bank. The biggest ever stash that we have had since the start of the knife bank.





***"I am aware of the very supportive nature of your community; your knife bin, streetwatch, anti-knife billboard posters and Friday prayer sermons."***

SUPERINTENDENT | WEST MIDLANDS POLICE

**"...WHOEVER KILLS A PERSON (UNJUSTLY)...IT IS AS THOUGH HE HAS KILLED THE WHOLE OF MANKIND. AND WHOEVER SAVES A LIFE, IT IS AS THOUGH HE HAS SAVED ALL OF MANKIND"**

THE QURAN, AL-MAIDAH, VERSE 32





## MEDIA ENGAGEMENT

Following the catastrophic events of the early 2000s, Islamophobic attitudes towards Muslims have continued to rise.

In the past, Muslims have largely been misrepresented by some of the mainstream media. At GLMCC, we recognise the imperative responsibility we hold to actively counter such narratives.

By working together with journalists and organisations such as the Muslim Council of Britain, we have been able to improve the media perception of Muslims. By sharing the positive work and values of our community, we are able to shape the true narrative and speak for ourselves.

Alhamdulillah, this has led to a much greater level of engagement between the media and the UK Muslim community.





## OVER 80 MEDIA ARTICLES AND APPEARANCES

***“GLM co-lead the VRU Faith Alliance,  
and absolutely pioneer the space of faith  
based action in tackling social issues”***

DELIVERY MANAGER | VIOLENCE REDUCTION UNIT

**In the last year, numerous articles have been written on GLMCC by various media outlets including CNN, Sky News, BBC, Birmingham Mail, Metro, The Telegraph, The Guardian and ITV news.**

These articles highlight the incredible work that GLMCC promotes and oversees, inviting the greater public to engage with Muslim communities. We have received a range of positive feedback from non-Muslims readers who are inspired by our work and initiatives, voicing their support for our campaigns.

We have a large online presence with over 750k Facebook followers, and over 100k YouTube subscribers which enables us to share our pioneering work with a large audience. In 2019, we have had over a dozen media appearances on ITV News, BBC, Eman Channel, Channel 5 and Islam Channel. Additionally, we regularly take part in radio interviews for channels such as BBC WM, Heart FM, Unity FM and Drivetime.

We hope that by continuing our efforts to promote positive media engagement with Muslims, we will empower British Muslims to practice their faith confidently, safely and with the aspiration to serve their community.



# A SPECIAL THANK YOU TO OUR PARTNERS AND SUPPORTERS

---



Home Office











## 2019 AWARDS

---

**Alhamdulillah, by the grace of Allah, Green Lane Masjid was nominated and received several awards:**

- 2019 British Muslim Awards winner for Mosque of the Year
- Beacon Award winner for 'Best Run Mosque 2019'
- Youtube Award (over 100,000 subscribers)





The Beacon Mosque  
Award Winner

Best Run Mosque  
2019

## GET INVOLVED / CONTACT

**To volunteer or for school visits:**

Email [info@greenlanemasjid.org](mailto:info@greenlanemasjid.org)

**To donate:**

Log onto [www.greenlanemasjid.org/donate](http://www.greenlanemasjid.org/donate)

Account Name: Green Lane Masjid

Account Number: 93330281

Sort Code: 200898

**For further information:**

To access our activities and services,  
log onto [www.greenlanemasjid.org](http://www.greenlanemasjid.org)



**Green Lane Masjid and Community Centre**

20 Green Lane, Small Heath, Birmingham,  
B9 5DB

Telephone: **0121 713 0080**

Email: **info@greenlanemasjid.org**

Website: **www.greenlanemasjid.org**

App: **app.greenlanemasjid.org**



**@GreenLaneMasjid**